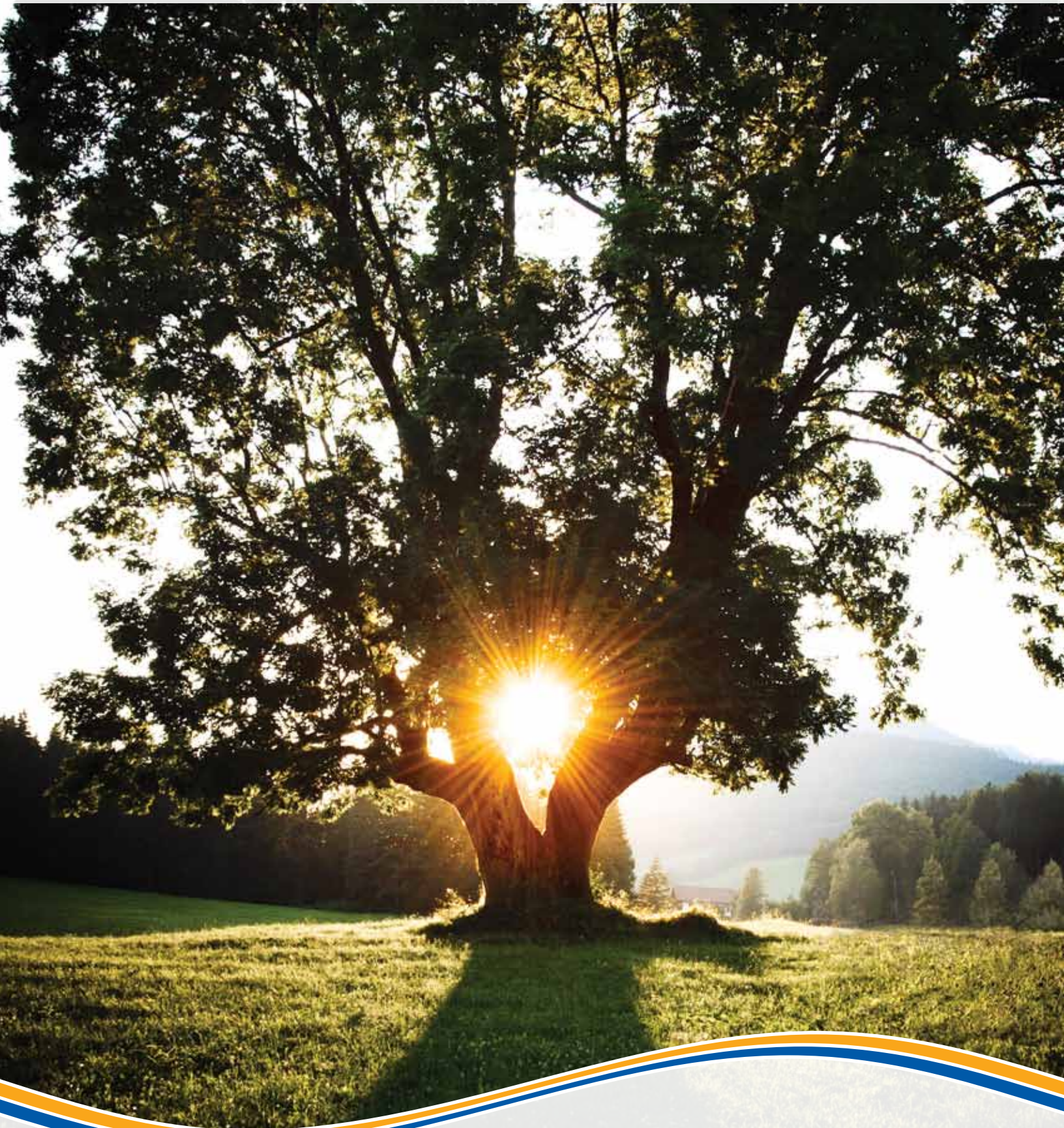




HUHTAMAKI

be seen as green.™



Chinet

STRONGHOLDER®

SAVADAY®


Bioware®

Huhtamaki Company Information

Huhtamaki's history – and future – is filled with regeneration, innovation and solid development. Today, our sustainable packaging carries the world's most renowned brands. We are 90 years old and still going strong!

Huhtamaki is a global consumer and specialty packaging company with a strong presence in key market categories such as smooth and rough molded fiber products, foodservice paper cups and other products based on paper forming expertise. In these operations, we have a strong know-how, technology platforms, and business concepts that allow continued competitive advantages.

Our main customer markets include foodservice operators, fast food restaurants, ice cream and other consumer goods markets, as well as retailers.

Huhtamaki has evolved from a multi-industry company into a consumer packaging specialist through a series of almost 200 company acquisitions and divestments since 1980. Many of the oldest and finest names in packaging now belong to our family. Huhtamaki's sub-brands include the retail and foodservice brands of Chinet[®], Strongholder[®] and Savaday[®], as well as the Bioware[®] brand family of compostable tableware and packaging.

Today, Huhtamaki employs approximately 12,000 employees in 54 manufacturing units and several sales offices in 33 countries worldwide. Net sales in 2010 amounted to 2.6 billion dollars. Huhtamäki Oyj's shares are listed on the NASDAQ OMX Helsinki Ltd.



Huhtamaki and Sustainability | Overview

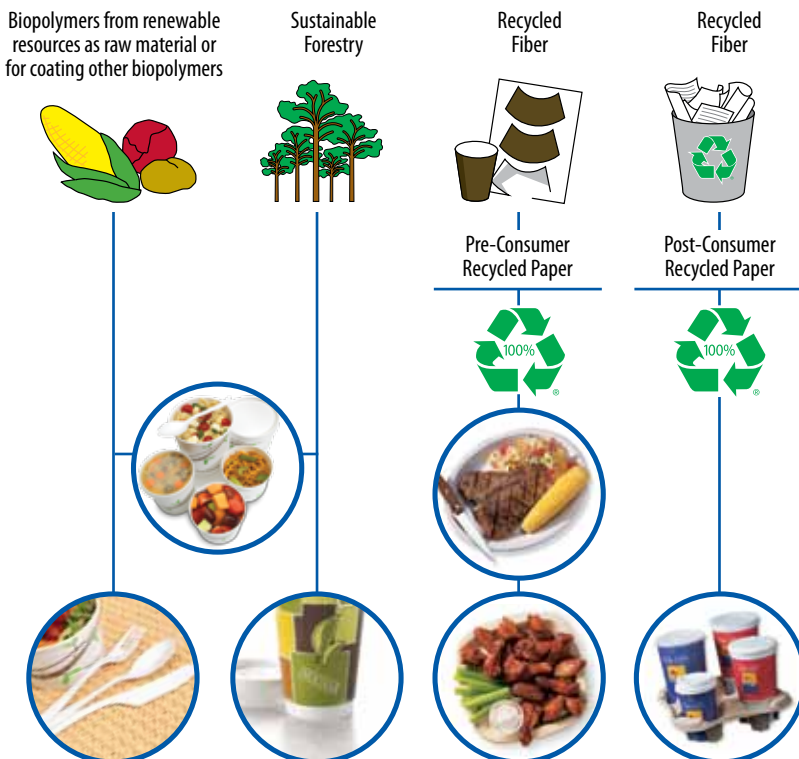
At Huhtamaki, sustainability means environmental protection, social equity, and economic prosperity. Huhtamaki believes our packaging achieves all these goals: it reduces resource usage and product waste, it lowers health risks, and it improves economic efficiency. Manufacturing resource-efficient packaging that improves the lifecycle performance of packaged food is a fundamental principle when we develop products.

Learn more about what we consider to be key sustainability aspects at www.huhtamaki.com.

Chinet® Brand History

Martin Keyes first came up with the idea of making disposable paper plates back in 1903 after seeing his fellow mill workers eating their lunch off large chips of maple veneer. The first order of paper pie plates (Savaday®) was made in a small plant in Maine on June 24, 1904. Keyes later bought a larger plant in Waterville, Maine in 1908, the very same plant that manufactures Chinet® molded fiber products today.

Packaging Raw Material Sourcing



Glossary

ASTM International (ASTM): An international standards organization that develops and publishes voluntary consensus technical standards for a wide range of materials, products, systems, and services.

ASTM 6868, ASTM 6400: ASTM International testing protocols for compostable materials.

ASTM D6866: International testing protocols for biobased materials.

Bagasse: Fibrous matter that remains after sugarcane or sorghum stalks are crushed to extract their juice. It is currently used as a biofuel and as a renewable resource in the manufacture of pulp and paper products and building materials.

The Biodegradable Products Institute (BPI): A professional association of key individuals and groups from government, industry and academia, which promotes the use, and recycling of biodegradable polymeric materials (via composting).

Certified Compostable: Product has been tested by the BPI and meets the ASTM standards for compostable materials. Product has been reviewed and approved by an independent commercial composting facility and meets the requirements for use in the commercial composting process.

Fossil Fuels: Fuels formed by natural resources such as anaerobic decomposition of buried dead organisms.

Molded Fiber: (Also known as molded) pulp is a material typically made from recycled paperboard and newspaper.

PLA (Polylactic Acid): A biodegradable, thermoplastic, aliphatic polyester derived from renewable resources. Corn starch (in the United States) or sugarcane (rest of world) are the common feedstock.

Recycled Fiber:

1) Pre-consumer: Industrial trimmings from food container manufacturers' production facilities and unprinted newspaper stock.

2) Post-consumer: Used newspapers that are pulped to make molded fiber.

Renewable Resources: A natural resource is a renewable resource if it is replaced by natural processes. Renewable resources are parts of our natural environment and form our eco-system.

Huhtamaki Materials



BRAND DESCRIPTION	MATERIAL	CERTIFIED COMPOSTABLE	PRE OR POST CONSUMER RECYCLED MATERIAL	100% RENEWABLE RESOURCE	MADE IN THE U.S.A.
-------------------	----------	-----------------------	--	-------------------------	--------------------

Chinet® Premium Strength Tableware

Classic White	Molded Fiber	●	Pre	●	●
Festival Design	Molded Fiber	●	Pre	●	●
Burgundy & Gray	Molded Fiber	●	Pre	●	●
Enviro Design	Molded Fiber	●	Pre	●	●
Impressions Design	Molded Fiber	●	Pre	●	●
Custom Prints	Molded Fiber	●	Pre	●	●
Cash & Carry Packs	Molded Fiber	●	Pre	●	●

Chinet® Cafeteria Trays

Cafeteria Trays	Molded Fiber	●	Pre	●	●
-----------------	--------------	---	-----	---	---

Paper Pro® Naturals™ Tableware

Tableware	Molded Fiber	●	Pre	●	●
-----------	--------------	---	-----	---	---

Savaday® Products

Savaday	Molded Fiber	●	Pre	●	●
---------	--------------	---	-----	---	---

Strongholder® Cup Carriers & Trays

Cup Carriers & Trays	Molded Fiber	●	Post	●	●
----------------------	--------------	---	------	---	---

Huhtamaki Clamshells

Clamshells	Bagasse	●	Pre	●	
------------	---------	---	-----	---	--

Bioware® Products

Cutlery	PLA	●		●	
Food Containers	Paperboard/PLA	●		●	●

Insulated Hot Cup

RC® Cup by Chinet®	Paperboard/PLA	●	Pre	●	●
--------------------	----------------	---	-----	---	---

Premium Strength Molded Fiber Tableware



Chinet® Premium Strength Molded Fiber Tableware sets the benchmark for strength, style and environmental sustainability in disposable tableware. Chinet® molded fiber tableware is made from 100% recycled fiber & certified compostable by the BPI.

- Superior strength upon which you can rely
- Cut resistant
- Image builder – The Chinet® brand is recognized by a majority of your customers as a premier brand in the United States
- Microwaveable
- Complete line of compartment plates, platters and bowls in all popular sizes
- Classic white or soft beige

FEATURE	BENEFIT
Made from 100% recycled fiber	Reuses valuable fiber and reduces land fill usage
Made from 100% renewable resource	No fossil fuel based resource is used
Certified compostable	Third party certified; composting recycles valuable resources
Stronger than traditional paper plates	Strength you can trust from the Chinet® Brand
Made in the U.S.A.	Consistent, reliable products and services
Wide variety of sizes and stock designs	Meets your every need
Custom rim print available	Bring your message or logo to your customer



Classic White	Burgundy & Gray	Festival	Item description	Packed Bag	Case Pack	Case Cube	Case Weight	Pallet Tie	Pallet High
21225	22501	22601	6" Round Plate	125	1000	1.28	16.5 lbs.	9	4
21226	22508	22608	6 3/4" Round Plate	125	1000	1.46	22.1 lbs.	9	3
21227	22502	22602	8 3/4" Round Plate	125	500	1.53	19.9 lbs.	10	3
21232	22509	22609	9 3/4" Round Plate	125	500	1.86	25.0 lbs.	6	5
21217	22505	22605	10 1/2" Round Plate	125	500	1.93	29.7 lbs.	7	4
21203	NA	NA	9" Round Shallow Plate	250	500	1.27	21.7 lbs.	8	5
21221	NA	NA	10 1/2" Extra Deep Round Plate	125	500	2.40	33.7 lbs.	10	2
21228	22503	22603	9 1/4" Compartment Plate	125	500	1.93	23.3 lbs.	10	3
21204	22510	22610	10 1/4" Compartment Plate	125	500	1.97	26.7 lbs.	7	4
21260	22506	22606	4 oz. Side Dish	250	2000	1.65	22.6 lbs.	10	2
21230	22507	22607	12 oz. Bowl	125	1000	1.63	23.5 lbs.	8	3
21229	NA	NA	16 oz. Bowl	250	1000	1.98	29.0 lbs.	9	3
21256	22504	22604	7 1/2" x 10" Oval Platter	125	500	1.56	20.4 lbs.	12	3
21257	22514	22618	9 3/4" x 12 1/2" Oval Platter	125	500	2.60	39.6 lbs.	6	3
21251	NA	NA	8 oz. Round Dish	167	1000	1.06	16.2 lbs.	10	3
25879	NA	NA	20 oz. Salad/Side Dish	120	480	2.33	18.9 lbs.	8	2

Molded Fiber Tableware Enviro Design



Foodservice operators use this stock design to show their clients they are using environmentally friendly packaging. The Chinet® “Enviro” Line of smooth molded fiber tableware is rim printed with the following:

- Made with 100% Recycled Paper Fiber
- Made from a Renewable Resource
- 100% Compostable in Composting Facilities
- Made in the USA
- Chinet® brand logo

FEATURE	BENEFIT
Printed Enviro message on each plate or bowl	Gives your customer a “green” message
Made from 100% recycled fiber	Reuses valuable fiber and reduces land fill usage
Made from 100% renewable resource	No fossil fuel based resource is used
Certified compostable	Third party certified; composting recycles valuable resources
Strong!	Strength you can trust from the Chinet® brand
Made in the U.S.A.	Consistent, reliable products and services



Item Number	Code Name	Item Description	Packed Bag	Case Pack	Case Cube	Case Weight	Pallet Tie	Pallet High
25709	Enviro 1	6" Round Plate	125	1000	1.23	16.5 lbs.	9	4
25710	Enviro 2	8 3/4" Round Plate	125	500	1.53	19.9 lbs.	10	3
25711	Enviro 3	10 1/2" Round Plate	125	500	1.93	29.7 lbs.	7	5
25717	Enviro 4	10 1/4" Compartment Plate	125	500	1.97	26.7 lbs.	7	4
25721	Enviro 6	12 oz. Bowl	125	1000	1.63	23.5 lbs.	8	3
25722	Enviro 7	7 1/2" x 10" Oval Platter	125	500	1.56	20.4 lbs.	12	3

IMPRESSIONS Premium Strength Embossed Plates

Chinet® IMPRESSIONS

Operators who desire a premium appearance for their products choose Chinet® IMPRESSIONS plates.

These plates are rim embossed which gives them a premium appearance.

Choose Chinet® IMPRESSIONS plates for those special events where “impressions” do count and give your clients the best.

FEATURE	BENEFIT
Embossed design	Improves quality image; Premium appearance
Made from 100% recycled fiber	Reuses valuable fiber and preserves natural resources
Certified compostable	Third party certified; composting recycles valuable resources
Stronger than traditional paper plates	Strength you trust from Chinet® brand
Made in the U.S.A.	Consistent, reliable products and services
Wide variety of sizes and stock designs	Meets your every need



Item Number	Code Name	Item Description	Packed Bag	Case Pack	Case Cube	Case Weight	Pallet Tie	Pallet High
25878	IMPRESS2	10 3/8" Dinner Plate	84	504	2.57	28.5 lbs.	4	4
25877	IMPRESS1	7 1/4" Dessert Plate	84	756	1.55	19.1 lbs.	5	5

Paper Pro® Naturals™

When cost constraints prevent the use of heavy-duty Chinet® tableware, mid-weight Paper Pro® Naturals™ plates & bowls are the ideal alternative. Paper Pro® Naturals™ tableware delivers the operational efficiency, sturdiness & customer satisfaction of molded fiber tableware at a price similar to paper plates.

- Priced similar to mid-weight paper plates, Paper Pro® Naturals™ plates and bowls allow even cost-sensitive operations to enjoy the benefits of molded fiber tableware
- No need to double-plate, even with large portions

FEATURE	BENEFIT
Earth tone hue	Emphasizes natural quality of product
Made from 100% pre-consumer recycled fiber	Reuses valuable fiber and reduces land fill usage
Made from 100% renewable resource	No fossil fuel based resource is used
Certified compostable	Third party certified; composting recycles valuable resources
Stronger than traditional paper plates	Strength you can trust from the Chinet® brand
Made in the U.S.A.	Consistent, reliable products and services



Item Number	Code Name	Item Description	Packed Bag	Case Pack	Case Cube	Case Weight	Pallet Tie	Pallet High
25774	PAPRO	6" Round Plate	125	1000	1.15	13.40 lbs.	12	4
25822	PAPRO7	6 3/4" Round Plate	125	1000	1.45	19.40 lbs.	9	3
25775	PAPRO1	8 3/4" Round Plate	125	500	1.16	16.40 lbs.	9	5
25776	PAPRO2	10 1/2" Round Plate	125	500	1.78	24.00 lbs.	7	5
25777	PAPRO3	10 1/4" Compartment Plate	125	500	1.78	21.40 lbs.	7	5
25778	PAPRO4	7 1/2" x 10" Oval Platter	125	500	1.23	16.50 lbs.	9	5
25779	PAPRO5	9 3/4" x 12 1/2" Oval Platter	125	500	2.40	35.50 lbs.	6	4
25780	PAPRO6	12 oz. Bowl	125	1000	1.43	20.70 lbs.	9	4

Molded Fiber Cup Carriers and Trays



Strongholder® molded fiber cup carriers and trays are strong, sturdy and easy-to-handle. Give your customers a confident grip with Strongholder® beverage carriers and trays.

- Sturdy and easy-to-handle
- De-nests quickly
- Holds a range of cups from 8 oz. to 46 oz.
- No assembly required



FEATURE	BENEFIT
Made from 100% recycled fiber	Reuses valuable fiber and reduces land fill usage
Exclusive T-Slot® design configuration in cup well of tray	Holds cups securely
Made from 100% renewable resource	No fossil fuel based resource is used
Certified compostable	Third party certified; composting recycles valuable resources
Strong!	Strength you can trust from the Chinet® brand
Made in the U.S.A.	Consistent, reliable products and services



Item Number	Code Name	Item Description	Cup Holder	Tray Dimensions	Case Pack	Case Cube	Case Weight	Tie High
20961	Focus	1-Cup Carrier w/ Food Tray	8 - 22 oz.	15" x 11" x 2"	200	4.99	37.50 lbs.	5x2
20954	Force	1-Cup Carrier w/ Food Tray	8 - 22 oz.	13" x 10" x 2"	200	4.58	27.70 lbs.	6x2
20974	Flow	2-Cup Carrier w/ Food Tray (n)	8 - 22 oz.	9 3/4" x 8 3/8" x 1 5/8"	400	5.18	33.90 lbs.	6x2
20975	Forum	2-Cup Carrier w/ Food Tray (n)	8 - 22 oz.	9 3/4" x 8 3/8" x 1 5/8"	250	3.54	21.20 lbs.	5x2
20990	Film	2-Cup Carrier w/ Food Tray (w)	8 - 44 oz.	14 7/8" x 11 1/2" x 2 1/16"	100	3.81	16.90 lbs.	6x2
20963	Fusion	2-Cup Carrier	8 - 44 oz.	6 1/4" x 9 3/4" x 2"	300	2.55	21.80 lbs.	9x2
20972	Flurry-C	4-Cup Carrier (corrugated)	8 - 22 oz.	8 1/2" x 8 1/2" x 1 5/8"	300	3.42	22.10 lbs.	6x3
20939	Flurry	4-Cup Carrier (shrink wrap)	8 - 22 oz.	8 1/2" x 8 1/2" x 1 5/8"	300	3.20	22.10 lbs.	6x3
20973	Figure	4-Cup Carrier	8 - 22 oz.	8 1/2" x 8 1/2" x 1 5/8"	300	3.42	22.08 lbs.	6x3
20994	Flight-C	4-Cup Carrier (corrugated)	8 - 32 oz.	8 1/2" x 8 1/2" x 1 3/4"	300	3.44	26.60 lbs.	6x3
20938	Flight	4-Cup Carrier (shrink wrap)	8 - 32 oz.	8 1/2" x 8 1/2" x 1 3/4"	300	3.30	26.60 lbs.	6x3
20968	Fluid	4-Cup Carrier w/ Food Tray (w)	8 - 44 oz.	17 5/16" x 10 3/4" x 2 1/8"	150	4.04	31.50 lbs.	6x3
20969	Fond	4-Cup Carrier w/ Food Tray (n)	8 - 22 oz.	13" x 8 3/8" x 1 1/2"	250	4.04	27.00 lbs.	6x3
20985	Frank-A	Large 4-Cup Carrier	8 - 46 oz.	10 5/8" x 10 5/8" x 2 4/5"	100	4.70	15.70 lbs.	6x3
20945	Field	4-Cup Carrier	8 - 32 oz.	8 1/2" x 8 1/2" x 1 3/4"	200	2.51	17.90 lbs.	8x3

Molded Fiber Plates, Bowls and Circles



Savaday® molded fiber plates, bowls and circles are perfect for back of house food contact applications. Savaday® products have superior oil absorbing capabilities that help extend the life of your product from prepping to serving.

- Perfect for fried, baked or broiled foods
- Wide variety of trays, circles, plates and bowls
- Extends visual appeal of foods
- Extra strong, extra absorbent
- Keeps the “crisp” in crispy foods

FEATURE	BENEFIT
Made from 100% recycled fiber	Reuses valuable fiber and reduces land fill usage
Made from 100% renewable resource	No fossil fuel based resource is used
Certified compostable	Third party certified; composting recycles valuable resources
Strong!	Strength you can trust from the Chinet® brand
Made in the U.S.A.	Consistent, reliable products and services
Wide variety of sizes and stock designs	Meets your every need



Item Number	Code Name	Item Description	Color	Packed Bag	Case Pack	Case Cube	Case Weight	Tie High
10407	Jury/No. 25	5" x 3 1/2" Tray	White	250	1000	1.19	4.1 lbs.	12x3
10408	Jump/No. 50	6" x 4" Tray	White	250	1000	1.58	17.8 lbs.	12x3
10403	Jess/No. 100	7" x 5" Tray	White	250	1000	2.13	23.4 lbs.	8x3
10404	Joy/No. 200	5 1/2" x 7 1/2" Tray	White	250	1000	2.67	31.3 lbs.	6x3
10405	Just/No. 300	9" x 7" Tray	White	250	500	2.96	23.7 lbs.	8x3
10112	Abeam	6" Plate	White	-	1000	2.13	18.9 lbs.	8x3
10113	Able	7" Plate	White	-	1000	2.66	25.2 lbs.	7x3
10114	Absorb	8" Plate	White	-	1000	3.66	34.1 lbs.	7x3
10116	Ace	9" Plate	White	-	500	2.24	21.9 lbs.	8x3
10117	Acorn	10" Plate	White	-	500	2.99	30.9 lbs.	8x2
10151	Barn	9" Deep Plate	White	-	500	3.09	23.2 lbs.	6x2
10167	Belt	10" Extra Deep Plate	White	-	500	3.04	27.1 lbs.	8x2
10203	Idol	7" Circle	White	-	1000	3.13	31.9 lbs.	7x3
10210	Impel	8" Circle	White	-	1000	4.04	41.7 lbs.	5x3
10205	Isle	9" Circle	White	-	500	2.50	25.6 lbs.	8x2
10228	Impair	10" Pizza Circle	White	-	250	3.22	19.6 lbs.	8x2
21022	Herb	4 1/2" Square Plate	White	-	2000	2.38	26.6 lbs.	9x3
21060	Echo	9" Round/45 oz. Bowl	White	-	500	3.54	26.5 lbs.	6x2
21061	Grip	7 1/2" Round (non-tipping)/31 oz. Bowl	White	-	250	2.93	21.6 lbs.	8x2
20962	Flag	1 Cup Carrier w/Food Tray	White	-	200	4.55	27.7 lbs.	6x3

Molded Fiber Cafeteria Trays



Chinet® premium molded fiber cafeteria trays are the only trays strong enough to be called Chinet®. These trays are perfect for any school, institution or mass feeding operation.

FEATURE	BENEFIT
Made from 100% recycled fiber	Reuses valuable fiber and reduces land fill usage
Made from 100% renewable resource	No fossil fuel based resource is used
Certified compostable	Third party certified; composting recycles valuable resources
Stronger than traditional styrofoam cafeteria trays	Strength you can trust from the Chinet® Brand
Made in the U.S.A.	Consistent reliable products and services



An economical molded fiber cafeteria tray for environmentally conscious users. SAVADAY® trays provide consistent performance and sustainability.



Chinet® Premium Molded Fiber Cafeteria Trays

Item Number	Code Name	Item Description	Packed Bag	Case Pack	Case Cube	Case Weight	Pallet Tie	Pallet High
22021	Valise	8 1/2" x 12 1/2" 6 Compartment	125	500	3.44	24.9 lbs.	6	3
22025	Valley	8 1/2" x 10 1/2" 5 Compartment	125	500	2.79	36.4 lbs.	7	3
22023	Vagrant	8 1/4" x 9 1/2" 3 Compartment	125	500	2.63	32.1 lbs.	7	3
22027	Lyric	8 1/2" x 12 1/2" 5 Compartment Tan	25	500	4.92	42.6 lbs.	5	3
22028	Light	8 1/2" x 12 1/2" 5 Compartment	125	500	4.53	42.6 lbs.	5	2

SAVADAY® by Chinet® Economical Molded Fiber Cafeteria Trays

Item Number	Code Name	Item Description	Packed Bag	Case Pack	Case Cube	Case Weight	Pallet Tie	Pallet High
20951	Flare	8" x 10" x 1" Tray	125	500	5.33	34.7 lbs.	6	3
20802	Turret	9" x 12" x 1" Tray	N/A	250	3.67	28.6 lbs.	6	3
20803	Fall	12" x 16" Tray	N/A	200	4.91	43.2 lbs.	5	3
20804	Farm	14" x 18" Tray	N/A	100	3.25	28.4 lbs.	8	3
21076	Flash	8 1/2" x 10 1/2" x 1" 5 Compartment	125	250	2.53	18.0 lbs.	8	3
21012	Flash2	8 1/4" x 10 3/8" x 1" 5 Compartment	250	500	3.99	27.5 lbs.	6	4

Hinged Molded Fiber Clamshells



HUHTAMAKI

Offer sturdy Huhtamaki clamshells for takeout and take home foods, hot or cold.

Made from natural fibers

- Bagasse fiber is certified compostable and a renewable resource
- Wicks steam to prolong freshness and keeps food from getting soggy
- Sturdy and cut resistant
- Reheatable in a microwave

Unique ribbing configuration

- Easy-to-lock, minimizes spillage
- Fast closing

Thick-walled containers

- Maintains integrity and acts as insulator to keep hot foods hot and cold foods cold

FEATURE	BENEFIT
Made from Bagasse	Uses valuable fiber
Made from 100% renewable resource	No fossil fuel based resource is used
Certified compostable	Third party certified; composting recycles valuable resources
Unique vertical and diagonal rib configuration	Increases strength



Item Number	Code Name	Item Description	Packed Bag	Case Pack	Case Cube	Case Weight	Pallet Tie/High
68001	CLM661	6" x 6" x 3" Small Hinged Container	100	400	1.67	21.3 lbs.	9 x 3
68002	CLM691	6" x 9" x 3" Hoagie Hinged Container	100	200	1.04	15.4 lbs.	12 x 4
68003	CLM881	8" x 8" x 3" Medium Hinged Container	100	200	1.30	17.4 lbs.	6 x 5
68004	CLM883	8" x 8" x 3" Medium 3-Compartment Hinged Container	100	200	1.35	17.4 lbs.	6 x 5
68005	CLM991	9" x 9" x 3" Large Hinged Container	100	200	1.49	20.7 lbs.	6 x 4
68006	CLM993	9" x 9" x 3" Large 3-Compartment Hinged Container	100	200	1.56	20.7 lbs.	6 x 4
68007	CLM9131	9" x 13" x 3" Large 1-Compartment Hinged Container	50	100	1.41	16.98 lbs.	10 x 3

Insulated Cups and Lids



RC Cup® from the valued Chinet® brand is the perfect way to instantly upgrade your beverage program. With our patent-pending triple-layer construction, these cups allow customers to comfortably handle hot or cold beverages without needing a jacket or extra cup.

- Recycled liner keeps hands cool twice as long as double cupping
- White space above and below the sleeve assures customers that the cup is already wrapped
- Recycled sleeve has a large graphics area to display your logo
- Stackable, dome and flat lids fit all three sizes
- Flat lid has locking tear-back & straw-slot for use with hot or cold beverages



FEATURE	BENEFIT
Cup made from 25% recycled materials	Reduces land fill usage
Triple wall construction	Excellent thermal insulator
Virgin fiber from renewable forests	No old growth timber used
High quality litho printing available	Strong branding and quality appearance



Cups

Item Number	Cup Size	Cup Design	Packed Bag	Case Pack	Case Cube	Case Weight	Pallet Tie	Pallet High
63007	12 oz.	Recycled	43	645	3.0	26.0 lbs.	8	4
63008	16 oz.	Recycled	33	495	3.0	23.3 lbs.	8	4
63009	20 oz.	Recycled	28	420	3.0	26.7 lbs.	8	4

Lids

Item Number	Cup Size	Cup Design	Packed Bag	Case Pack	Case Cube	Case Weight	Pallet Tie	Pallet High
89344	Dome Lid	Black	100	1200	2.2	13.5 lbs.	8	6
89345	Dome Lid	White	100	1200	2.2	13.5 lbs.	8	6
89348	Flat Lid	White	100	1200	2.2	8.6 lbs.	8	6

Bioware® Food Containers



Bioware® food containers offer packaging that takes into account the needs of today's consumers and respects the importance of preserving our environment for the future.

Bioware food containers are made from paper coated with Ingeo™ biopolymer, the world's first and only performance plastic made from 100% annually renewable resources.

Future friendly packaging made from a renewable resource and certified compostable by the BPI.

FEATURE	BENEFIT
Made from 100% renewable resources	Reduces impact on non-renewable resources
Certified compostable	Composting reduces landfill and air pollution
Made in the U.S.A.	Consistent reliable products and services



Item Number	Huhtamaki Stock Lid	Item Description	Packed per Sleeve	Case Pack	Case Cube	Case Weight	Pallet Tie/High
76841	89107, 71870	6/8 oz. Squat Container	50	1000	4.97	20.9 lbs.	4 x 2
76842	89107, 71870	8/10 oz. Container	50	1000	3.39	19.7 lbs.	6 x 2
76843	89107, 71870	12 oz. Container	50	1000	3.46	21.1 lbs.	6 x 2
76844	89112, 71871	16 oz. Squat Container	25	500	3.96	16.7 lbs.	4 x 3
76845	89107, 71870	16 oz. Tall container	50	1000	3.17	24.0 lbs.	6 x 2
76846	89112, 71871	32 oz. Container	25	500	4.60	24.6 lbs.	4 x 4

Bioware® Cutlery



Bioware® cutlery are made from Ingeo™ biopolymer, the world's first and only performance plastic made from 100% annually renewable resources.

- High quality 6" and 7" product
- Temperature resistant to 190° for all hot and cold food applications

FEATURE	BENEFIT
Made from 100% renewable resource	Reduces dependence on fossil fuels - oil
Certified compostable	Reduces landfill usage



Item Number	Item Description	Packed per Sleeve	Case Pack	Case Cube	Case Weight	Pallet Tie	Pallet High
88020	6" Lightweight Knife	100	500	0.19	4.00 lbs.	26	9
88021	6" Lightweight Fork	100	500	0.25	4.13 lbs.	25	7
88023	6" Lightweight Spoon	100	500	0.31	4.88 lbs.	22	6
88030	7" Heavyweight Knife	100	500	0.31	8.52 lbs.	20	7
88031	7" Heavyweight Fork	100	500	0.37	8.21 lbs.	19	6
88032	7" Heavyweight Spoon	100	500	0.40	9.24 lbs.	19	6

Chinet®, Paper Pro®, Strongholder®, RC Cup®, and T-slot® are registered trademarks of Huhtamaki, Inc.
Bioware® is a registered trademark of Huhtamaki Oyj.
be seen as green™ and Naturals™ are trademarks of Huhtamaki.
Some rim print designs are copyrights of Huhtamaki, Inc.
Ingeo™ is a trademark of Natureworks, LLC.

Huhtamaki, Inc.
9201 Packaging Drive
DeSoto, Kansas USA 66018
800-244-6382
www.us.huhtamaki.com

